



# Annual Report 2019

WOMEN AND YOUTH SUPPORTING EACH OTHER

# Letter from the Board

---

The 2019-20 program year commemorates 28 years of WYSE mentoring: 28 years of girls learning and maturing together, emerging from WYSE as self-determined leaders. WYSE has helped young women (in middle school and college alike) develop the self-confidence and critical thinking skills to navigate the world around them. Over the past three decades, we have cultivated a sisterhood of WYSE women who truly inspire, empower, and support one another. The possibilities of our growing WYSE Alumnae Network are limitless!

This was an atypical program year indeed. WYSE branch operations were abruptly halted in March when the nation shut down due to COVID-19. Following the lead of our university and middle school partners, after school programming was cancelled and mentors were instructed to finish the semester remotely. There were no spring field trips, end of year banquets, or final mentor/mentee outings. However, our branches engaged virtually in National WYSE Week in April and are now determining how best to elevate WYSE's impact in the unusual school year ahead.

# Letter from the Board

---

With all that has transpired in our country – and in our world – since WYSE sessions paused in March, the work we do remains urgent. Girls need WYSE. Our mentees’ communities are among those hit hardest by COVID-19, not to mention ongoing and pervasive racial injustice. It’s evident that the traumas of 2020 will take a tremendous toll on our communities’ collective wellness. As such, we are dedicated to innovating to ensure WYSE persists.

WYSE helps girls sift through the myriad of information and influences that surround them, and promotes critical thinking and decision-making that lead to positive life choices. Perhaps most importantly, WYSE gives girls the confidence to find and use their voices – to show up, stand up, and speak up when it’s too critical to remain silent. WYSE will be present as our communities take action this year.

Thank you for believing in WYSE and being an ally in the fight for social justice!

Melissa Pierce  
Chair, National Board of Directors

# What is WYSE?

---

Women and Youth Supporting Each Other (WYSE) is a national mentorship organization that provides adolescent girls in underserved communities with the information, resources, and support to make healthy decisions and create community change. With branches at ten universities nationwide, WYSE focuses on empowering women and girls through group-based and one-on-one mentorship offered by college women volunteers, and employs a national curriculum to address critical issues, from building self-awareness to exploring future options.

WYSE is committed to inclusivity and belonging for all women: trans women, cis women, femmes, female-identifying, and individuals assigned female at birth. We envision a world in which we are all empowered to determine our futures and effect change.

# Mission

---

To empower young women by providing the resources and support necessary to make positive life choices and create community change

# Vision

To create a world in which all women are empowered to determine their future and effect change

# Pillars of WYSE

---

## **Critical Thinking and Decision Making**

WYSE women explore fully and think deeply about significant issues in order to make informed, deliberate decisions.

## **Personal Identity and Self Esteem**

WYSE women strive to recognize, explore, and proudly express who they are as individuals.

## **Strong Relationships**

WYSE women believe in the power of positive relationships to change lives. WYSE women dedicate themselves to being a positive influence and role model for those around them.

## **Safe Community and Exploration**

WYSE women express their ideas, ask questions, and learn in a safe, open, and accepting community. WYSE women encourage others to speak up and help each other discover new ideas.

## **Community Change**

WYSE women strive to make a better society by gathering information, spreading awareness and taking action on issues that are meaningful to them.



# Our Branches

George Washington University | Marquette University | Occidental College |  
Stanford University | Tulane University | University of Chicago | University of California, Berkeley |  
University of California, Irvine | University of California, Los Angeles | University of Southern California





# Our Middle Schools

Cesar Chavez Academy | Ravenswood Middle School | PUC CALS | Mark Twain Middle School |  
Francisco Sepulveda Middle School | Camino Nuevo Charter Academy | VISTA Charter Middle School |  
Animo Jefferson Charter Middle School | Crown Preparatory Academy | Jefferson Middle School  
Academy | Scholarship Prep | John B. Drake Elementary | Lovonya DeJean Middle School |  
Barack Obama School of Career and Technical Education





# Program Year 2019-2020

## Milestones

---

500

mentees and mentors served by  
WYSE

67

young women involved in  
branch leadership

10

WYSE branches nationwide

14

middle schools served

\$1,484

Money raised by WYSE at Tulane for  
the New Orleans Workers Group

\$4,000

Money raised by WYSE at USC for the  
Black Mama's Bail Project

### Methodology:

Total number of mentees and mentors are taken from point-in-time counts and likely represent an undercount of the number of program participants.

# Summary of Mentee Pre-WYSE Survey Responses, Fall

*As universities and middle schools abruptly shut down in March due to COVID-19, WYSE's school-based programming was prematurely terminated. Unable to measure end-of-year program outcomes given these circumstances, we present data collected from mentees at the start of the program year, Fall 2019.*

**96%**

I have goals for my future.

**61%**

If I decide to have sex, I know how to protect myself against sexually transmitted infections (STIs) and pregnancy.

**90%**

I am confident in my ability to make healthy decisions to achieve my goals.

**73%**

I have the power to make a difference in my community.

**92%**

I have the resources and tools I need to help friends and others make wise choices.

## Methodology:

Start-of-year surveys were administered at all WYSE branches and middle schools. Questions were asked on a four-point scale from 1 ("Strongly Disagree") to 4 ("Strongly Agree"). Percentages reflect the proportion of respondents who answered 3 or 4 on the scale.



# Leadership Training

In preparation for the 2019-2020 WYSE program year, we hosted our **National Leadership Training Conference (NLTC)** June 27-29, 2019, at the University of Southern California. College branch directors from across the country engaged in leadership workshops and peer-to-peer learning. WYSE women collaborated and problem-solved with sister branches, exchanged best practices, and empowered one another as a community of leaders.

# WYSE Week

---

WYSE Week is the annual celebration across our WYSE branches of the mission of WYSE and it inspires mentors and mentees to take community action.

WYSE branches celebrated WYSE Week **April 13 - 17, 2020**, with the theme "As I Grow WYSEr."

Our branches participated by hosting virtual WYSE Week events with mentors, mentees, and alumni through Zoom sessions, social media challenges, and branch-to-branch shoutouts.

# WYSE Week 2020

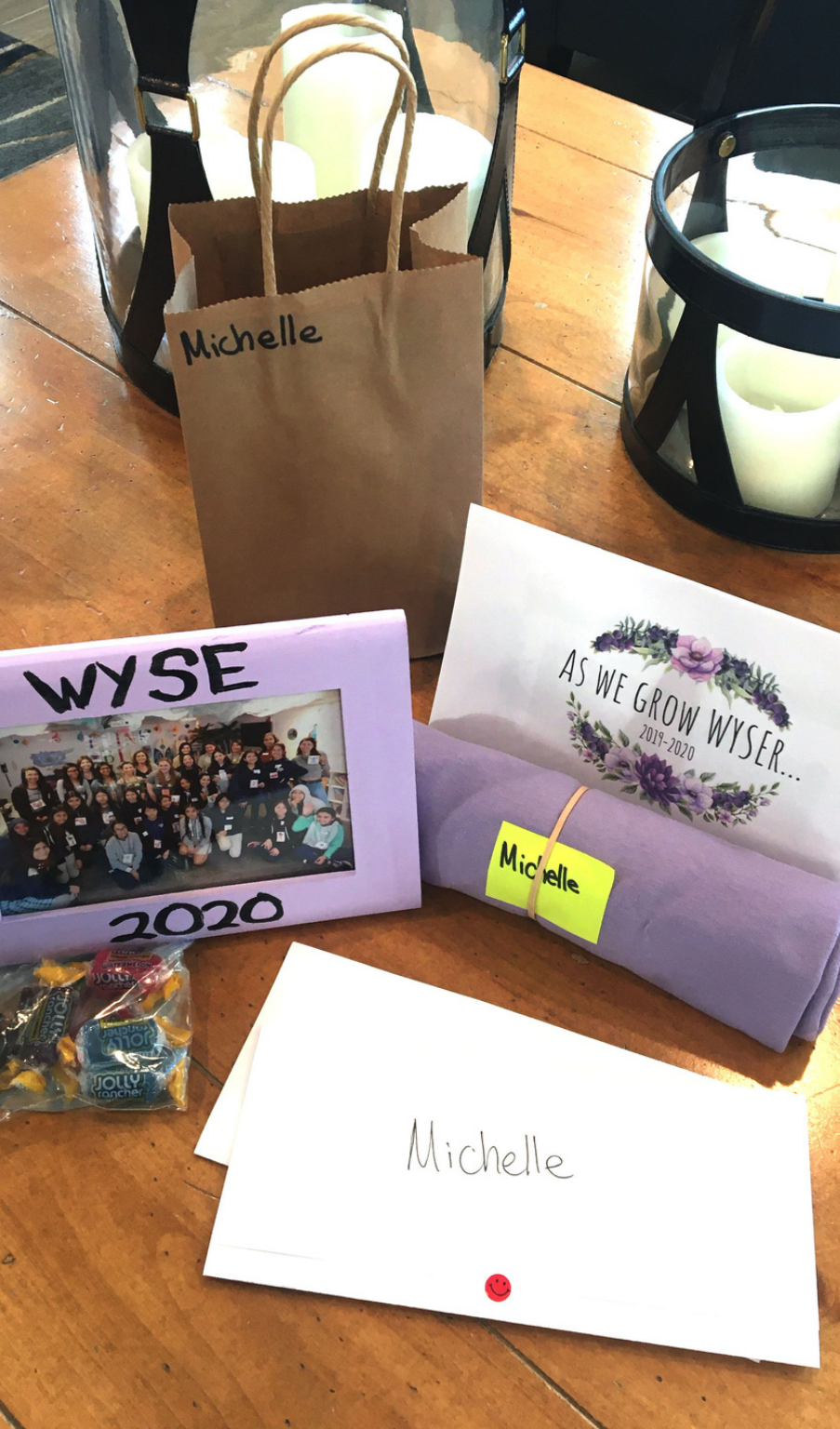
#ASIGROWWYSER





uciwyse

gw\_wyse



TO HAVE HAD TO CANCEL THE REMAINDER OF THE YEAR DUE TO COVID-19 HAS BEEN DEVASTATING FOR OUR MENTORS, ESPECIALLY SINCE ALL OF OUR MENTORS ARE EITHER NEW OR GRADUATING - MEANING THIS WAS EITHER THE FIRST YEAR IN WYSE OR LAST FOR EVERY SINGLE MENTOR.

MANY OF OUR MENTORS HAD ALREADY BEGUN TO DEVELOP STRONG RELATIONSHIPS WITH THE MENTEES, SO WE WANTED TO HAVE THE OPPORTUNITY TO WISH THEM A FORMAL GOODBYE AND GOOD LUCK AS THEY ENTER HIGH SCHOOL AND BEYOND. WE ARRANGED TO DROP OFF THE MENTEE T-SHIRTS (WHICH UNFORTUNATELY HAD ARRIVED THE EVENING AFTER OUR LAST SESSION WITH THEM), ALONG WITH A LETTER FROM THEIR MENTOR AND SEVERAL OTHER GOODIES.

*SARAH YRACEBURU  
WYSE at UC Irvine*

# Financial Overview

---

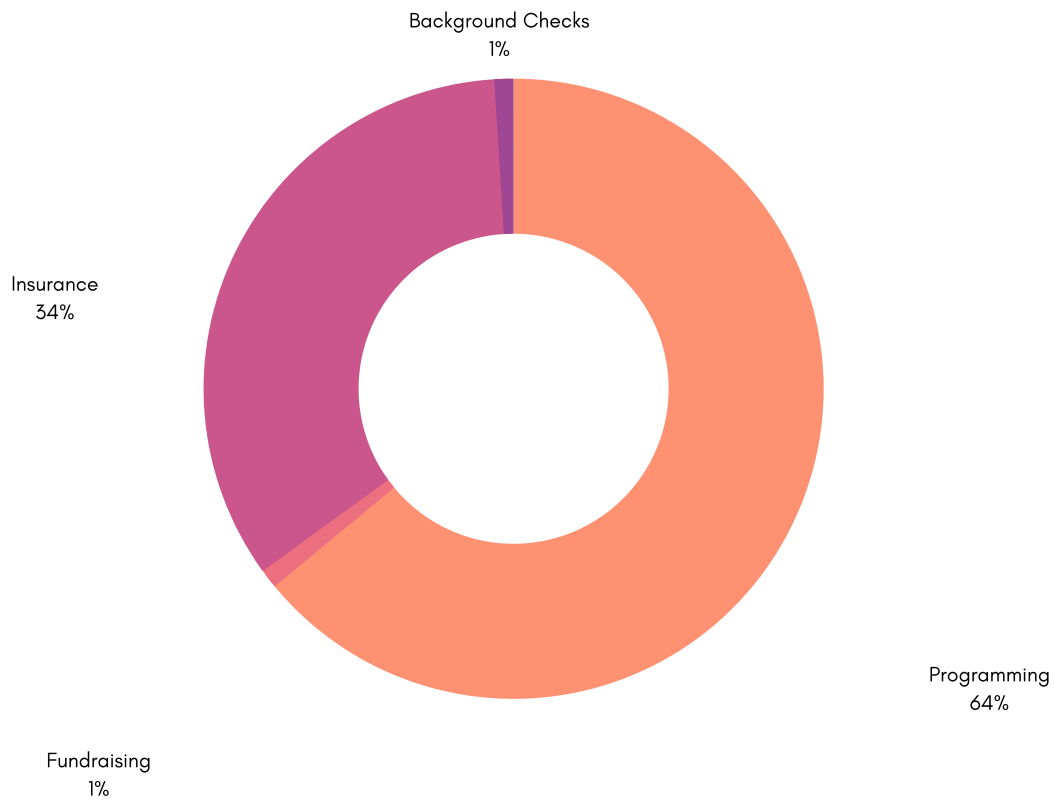
What did our finances look like in 2019? Here is an overview of the expenses and revenue for WYSE, with comparison to years past, from January 2019 - December 2019.

WYSE is a 100% volunteer-run organization, with nominal overhead expenses and all revenue going back into programming, operations, and fundraising support.

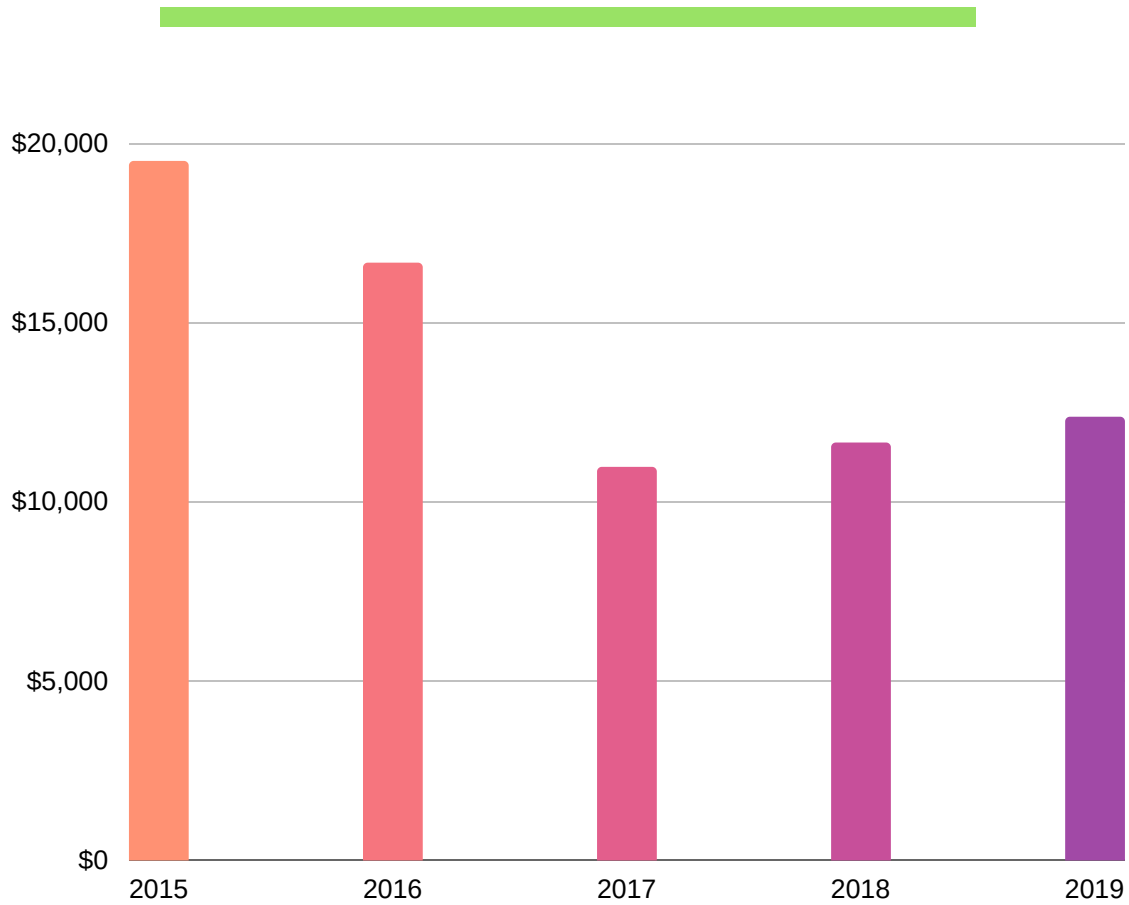


# Expenses

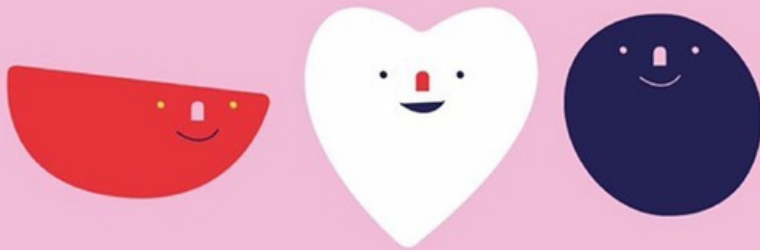
Total expenses in 2019: \$12,367.42



# Expenses



Together We  
Can Overcome



Check out how our  
mentors have been  
keeping busy!

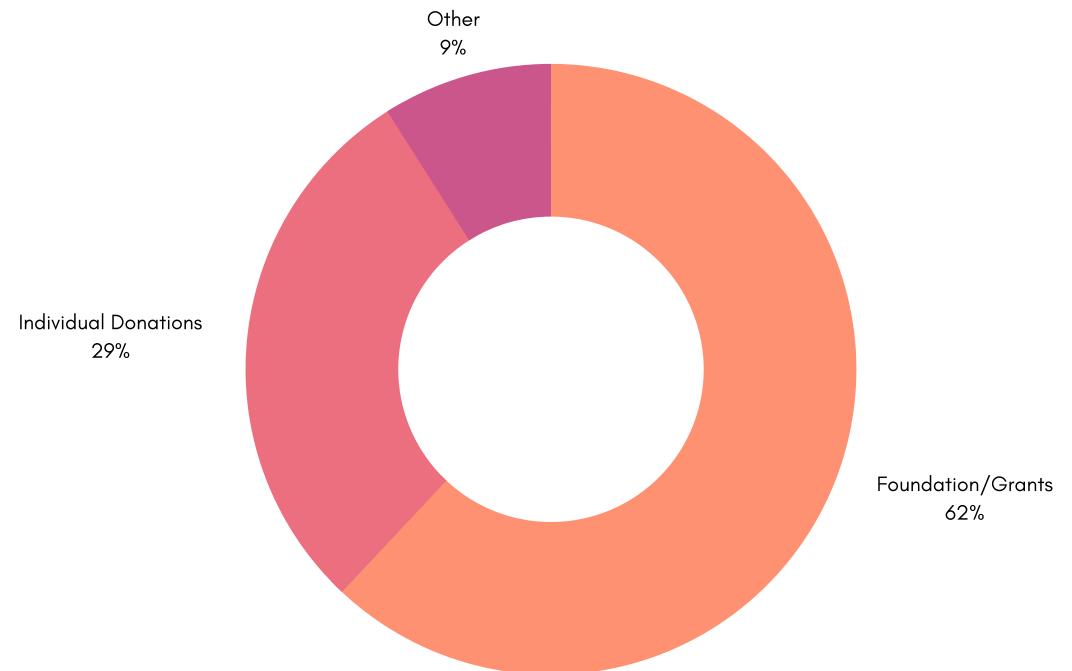
#AsIGrowWYSEr | #WYSEWeek20



wysemarquette

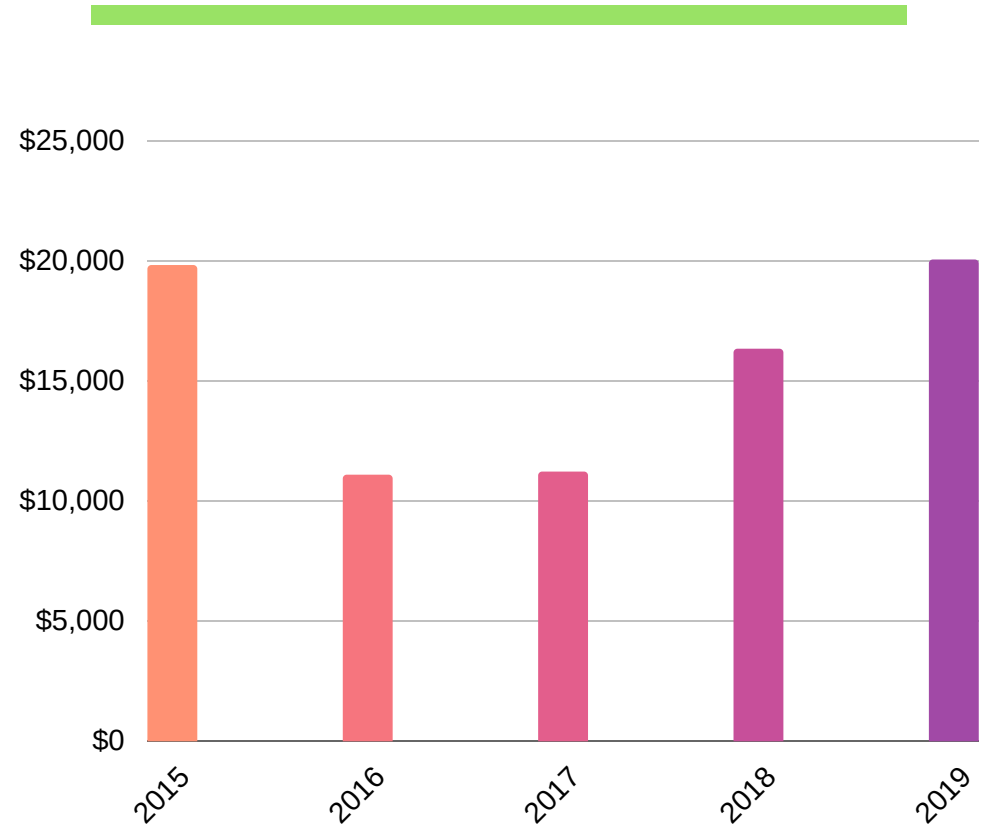
# Revenue

Total revenue in 2019: \$20,022.18





# Revenue



# Thank You, Donors!

---

Thank you to our generous WYSE family of donors in 2019\* that continue to support our programs across the nation.

Maika Abdallah  
Ryan Allen  
Laura Allen  
Amy Bard  
Madeleine Becker  
Remi Beek  
Melissa Beek  
Bradley Bentz  
Lauren Bergquist  
Steph Biehl  
Jill Boyd  
Anna Boyle  
Anna Bryan  
Jordyn Buettnr  
Maddi Bukaty  
Ray Bukaty  
Laura Burkhauser  
Leonor Cedano  
Yvonne Chao  
Cameron Cler

Patricia Darlin  
Tali Datskovsky  
Ashim Datta  
Rajeshree Dembla  
James Driscoll  
Magali Duque  
Kathy Dykeman  
Annlee Ellingson  
Marina Elmore  
Danny Frenkel  
Steve Geinitz  
Russell & Nancy Ghoston  
Leah Ghoston  
Shayna Goldberger  
Carolyn Gorski  
Maureen Gorski  
Lauren Gorski Allen  
Jesse Graham  
Hunter Gunari

Mellinda Hensley  
Amitpal Huckabay  
Sophia Kaur Huckabay  
Tomá Hunt-Beczak  
Rahn Jackson  
Victor Jones Jr  
Stephanie Kennedy  
Tia Kim  
Winnie lam  
James Lambert  
Jackie Lee  
Kristina Lee  
Jessica Lent  
Linda Leung  
Sherry Li  
Mary Liu  
Judy Luk  
Tiffany Luong

*\*These donations span January 1, 2019 - December 31, 2019*

# Thank You, Donors!

---

Thank you to our generous donors and WYSE family that continue to support our programs across the nation\*.

Molly Maguire  
Manik Marasinghe  
Kaitlin Meek  
Tiffany Miao  
Casey M. Miller  
Sean Miller  
Christina Morrisett  
Jamelle Nelson  
RM Nichols  
Celine Paganini  
John Payne  
Melissa Pierce  
Lloyd Pierce  
John Pierce  
Jill Polina

Townes Pressler  
Gelyna Price  
Ana Rocca  
Clara Salzberg  
Nathalie Sarju  
Hillary Scholl  
Erica Schoonover  
Dipanjan Sen  
B.J. Serviss  
Mordi Shadpour  
Laura Shaw  
Anna Shaw-Amoah  
Daniel Shaw-Amoah  
Callan Showers  
Logan Silliman

Laura Staley  
Derek Sukstorf  
Giulianna Sutkiewicz  
Katie Tonsoline  
Brooke Upchurch  
Alison Upton López  
Kaviarasu Venkatachalam  
Sue Vinella  
Melissa Vogel  
Brooke Wallace  
Christina Webb  
Eric Welsh  
Linda Wooldridge  
Chelsea Yost  
Elaine Zhong

*\*These donations span January 1, 2019 - December 31, 2019*

# Thank You, Community Partners!

---

WYSE received in-kind contributions, pro bono services, and foundation and corporate donations from the following partners\*:

**Apple and The Benevity Fund**

**AmazonSmile**

**Campus Catalyst at U Chicago**

**Greenleaf Gourmet Chop Shop**

**Jewish Foundation of Memphis**

**The Norman and Sadie Lee Foundation**

**Pierce Family Charitable Fund**

*\*These donations span January 1, 2019 - December 31, 2019*

# Connect with us

---

## EMAIL

info@WYSE.org

## WEBSITE

www.WYSE.org

## SOCIAL

*LinkedIn:*

Women and Youth Supporting Each Other

*Facebook and Twitter:*

@WYSEmentoring

*Instagram:*

@WYSE\_Mentoring





Thank You!

